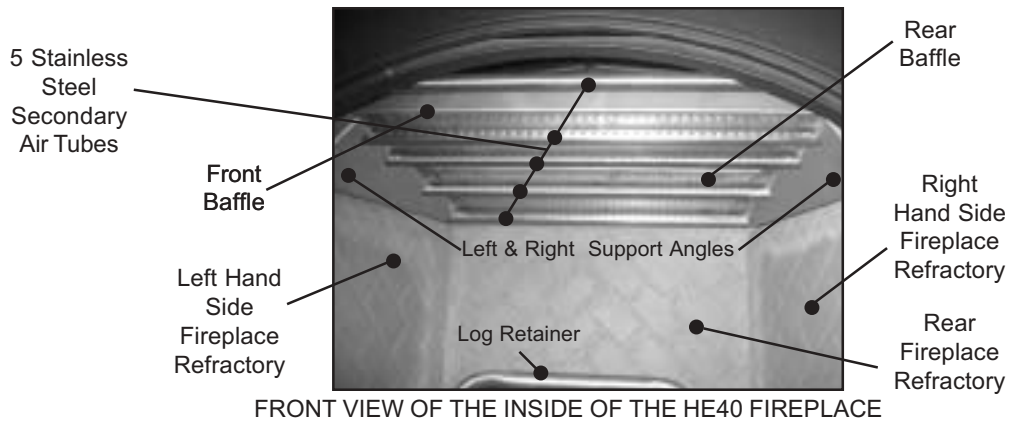


# HE40 Secondary Burn System

## REMOVAL & REPLACEMENT



**ATTENTION!** For a thorough cleaning or sweeping of the chimney system from the inside of the fireplace (due to a steep roof pitch), follow Steps 1 through 9.

**Step 1.** Release the log retainer from its locked position by sliding the ash drawer forward. Once unlocked, lift out the log retainer (see Figure 2).



FIGURE 1  
Log Retainer



FIGURE 2  
Log Retainer and Ash Pan

**Step 2.** Remove the bottom fireplace refractory brick (see Figure 3).



FIGURE 3  
Bottom Refractory

**Step 3.** Remove the right and left support angles by pushing upward against the side at the top (with the head of a screwdriver) until the flange clears the lanced tab (see Figure 4a). You can also push up on the front baffle to release the tension on the support angle.

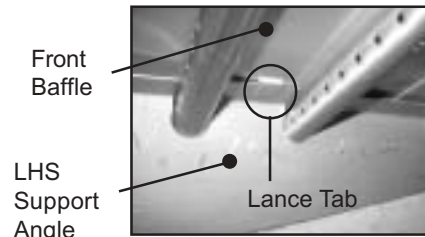


FIGURE 4a  
Lance Tab

Figure 4b shows the unclipped left hand side support angle. Once unclipped, remove both support angles from the air tubes.



FIGURE 4b  
Unclipped Tab

**Step 4.** Remove the right hand side fireplace refractory brick as per Figure 5. There is no need to remove the LHS or rear refractory bricks unless replacement is required.



FIGURE 5  
RHS  
Fireplace  
Refractory

**Step 5.** Remove the front secondary air tube by simply removing the screw located on the top left hand side (as per Figure 6). This screw simply wedges the front air tube in place.

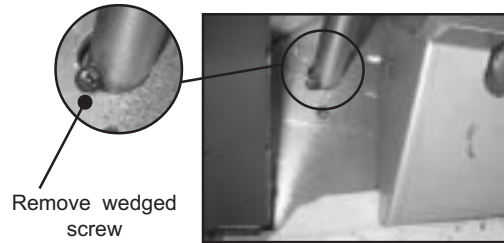


FIGURE 6

**Step 6.** Slide the secondary air tube out of the hole. (See Figure 7). There is no need to remove the rear refractory brick unless replacement is required.



FIGURE 7

**Step 7.** Lift the front baffle and tilt it forward and slide it down towards the front of the fireplace (see Figure 8b). Do the same with the rear baffle but slide it between the 3rd and 4th secondary air tubes (see Figure 8a & 8c).

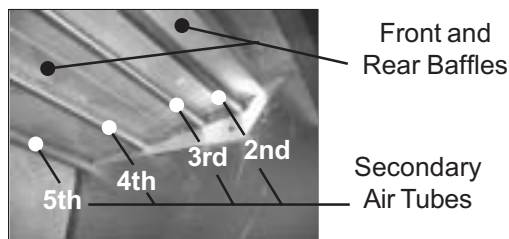


FIGURE 8a



Tilt Baffle downward toward  
the front of fireplace  
FIGURE 8b



Tilt Baffle downward  
towards front of fireplace  
FIGURE 8c

**Step 8.** If you want to clean the chimney system from the inside of the fireplace proceed with the final step. Except for the secondary air tube #5 (unless replacement is required of the rear fireplace refractory brick) unhook and remove the remaining secondary air tubes by loosening the two screws on the RHS retainer (see Figure 9). Unhook the secondary air tubes from the side retainer.

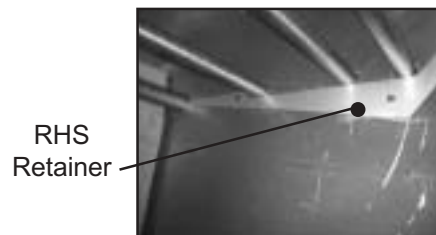


FIGURE 9

**Step 9.** Re-install all parts in reverse order as removed. Do not operate the fireplace with missing parts.



**sel kirk canada corporation**

1400 California Avenue  
Brockville, On K6V 5V3

Tel: 1-800-267-8178

Fax: 1-800-663-3620

www.selkirkcanada.com

e: info@selkirk.com