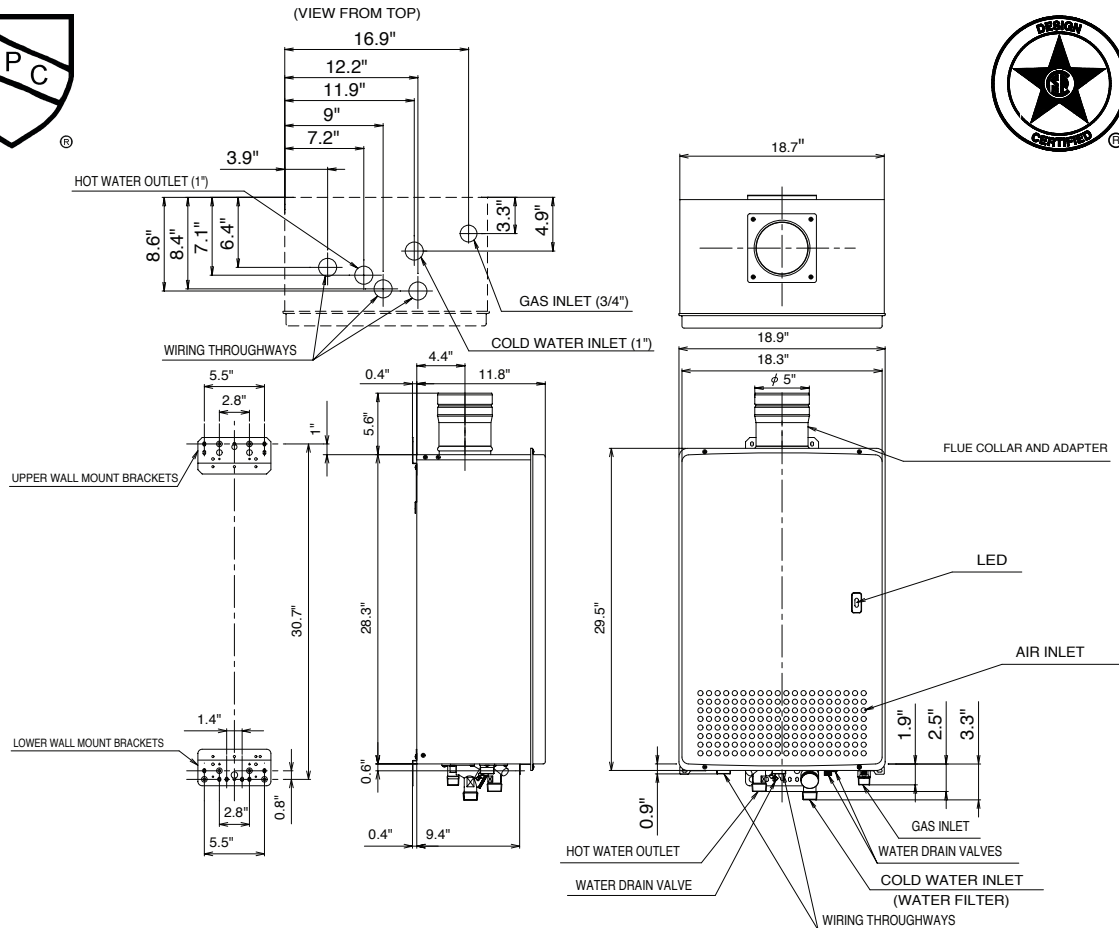


Model N-132M Product Specification Sheet



| Item | | Specification |
|--------------------------|--------------------|--|
| Model Name | | N-132M |
| Type | Installation | Indoor, Wall Hanging |
| | Air-supply/Exhaust | Power Vented |
| Ignition | | Direct Ignition |
| Operating Water Pressure | | 15 - 150 PSI |
| Minimum Flow Rate | | .75GPM |
| Gas Supply Pressure | | NG : 5.0" - 10.5" LP : 10.5" - 14.0" |
| Dimensions | | 29.5"(Height) x 18.9"(Width) x 11.8"(Depth) |
| Weight | | 105(pounds) |
| Water Holding Capacity | | 0.6 Gallon |
| Connection Sizes | Water Inlet | 1" |
| | Hot Water Outlet | 1" |
| | Gas Inlet | 3/4" |
| Power | Supply | 120VAC(60Hz) |
| | Consumption | NG: 137W LP: 142W Freeze Prevention 371W |
| Material | Casing | Zincified Steel Plate / Acryl Coating |
| | Flue Collar | Stainless Steel |
| | Heat Exchanger | Copper Sheeting, Copper Tubing |
| Safety Devices | | Flame Rod, Thermal Fuse, Pressure Relief Valve, Wind Pressure Switch, Lightning Protection Device (ZNR), Electric Leakage Prevention Device(GFCI), Overheat Prevention Device, Freezing Prevention Device, Fan Rotation Detector |
| Accessories | | Remote Cotroller, Remote Controller Cord, Exhaust Adapter, Anchoring Screws |

NORITZ AMERICA CORPORATION

25172 Arctic Ocean Drive, Suite 102, Lake Forest, CA 92630 Tel. 1-866-7NORITZ www.noritzamerica.com